

PCE

TWIST

EXTRA-LOW-VOLTAGE

Connection
to the future



IP67

watertight

IP44

splashproof



Protective extra-low-voltage is a preventive measure **for use under extreme conditions**. The **rated voltage** (AC) is limited by **max. 50V**.

Special working conditions like conductive environment in or on boilers, pipelines, containers, metal frames or limited freedom of motion require the use of extra-low-voltage plugs and sockets.

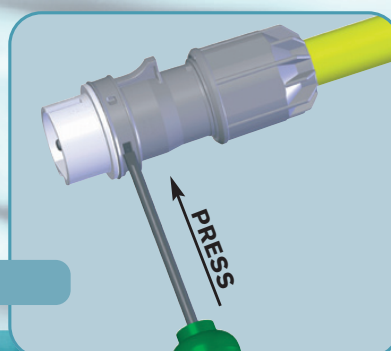
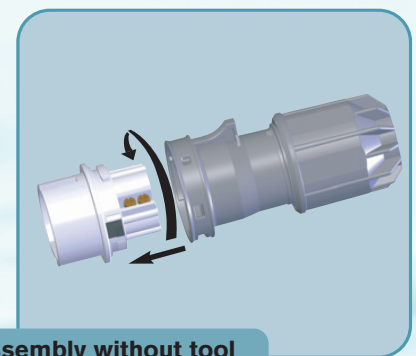
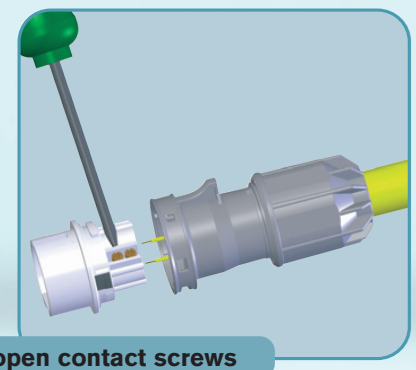
The new “Twist” extra-low-voltage series provides a **complete range of plugs, connectors and flanged sockets** which meet all installation requirements, specially developed for use on building sites, shipyards and in factories. Connecting the cable is fast and reliable! No tools are needed for assembly!

VERSIONS :

- 16A and 32A
- IP44 and NEW IP67
- Plug, connector and flanged socket
- 2p and 3p
- 24V and 42V
- DC, 50/60Hz, 100 to 500 Hz

PRODUCT FEATURES:

- ASSEMBLY WITHOUT TOOL
 - multi-ramp quick lock system
 - easy fitting by twist-lock action
- DISMANTLING
 - simply unlock and twist to open

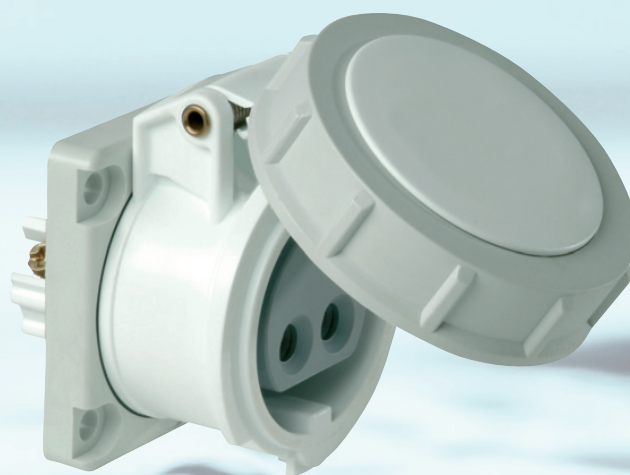


LOW - V O L T A G E

ADVANTAGES :

- TWIST cable gland for quick and easy assembly
- fast cable installation
- strain relief and sealing of the cable by tightening the cable-lock gland
- maximum cable security
- ample connection space
- easy to handle cable gland by multi-ramp quick-lock system

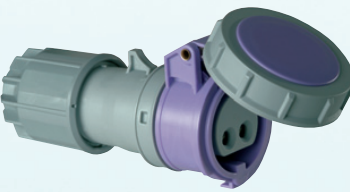
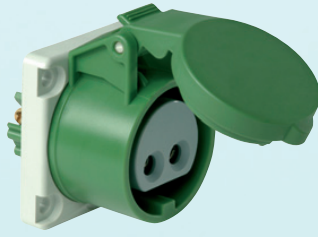

for cable diameters from \varnothing 8 bis \varnothing 24mm



ORDER NUMBERS

		Cat.No.	Cat.No.	Cat.No.	Cat.No.	Cat.No.	Cat.No.	Cat.No.	
		24V~ 50/60Hz without Minor key	42V~ 50/60Hz 12h	24/42V~ 100-200Hz 4h	24/42V~ 300Hz 2h	24/42V~ 400Hz 3h	24/42V~ 401-500Hz 11h	24/42V= DC 10h	
Amps	Poles								
„Twist“ Plug IP44									
	16	2	062	082-12	082-4	082-2	082-3	082-11	082-10
	16	3	063	083-12	083-4	083-2	083-3	083-11	083-10
	32	2	072	092-12	092-4	092-2	092-3	092-11	092-10
	32	3	073	093-12	093-4	093-2	093-3	093-11	093-10
	„Twist“ Plug IP67								
		16	2	0622	0822-12	0822-4	0822-2	0822-3	0822-11
16		3	0632	0832-12	0832-4	0832-2	0832-3	0832-11	0832-10
32		2	0722	0922-12	0922-4	0922-2	0922-3	0922-11	0922-10
32		3	0732	0932-12	0932-4	0932-2	0932-3	0932-11	0932-10
„Twist“ Connector IP44									
		16	2	262	282-12	282-4	282-2	282-3	282-11
	16	3	263	283-12	283-4	283-2	283-3	283-11	283-10
	32	2	272	292-12	292-4	292-2	292-3	292-11	292-10
	32	3	273	293-12	293-4	293-2	293-3	293-11	293-10

ORDER NUMBERS

		Cat.No.	Cat.No.	Cat.No.	Cat.No.	Cat.No.	Cat.No.	Cat.No.
Amps	Poles	24V~ 50/60Hz without Minor key	42V~ 50/60Hz 12h	24/42V~ 100-200Hz 4h	24/42V~ 300Hz 2h	24/42V~ 400Hz 3h	24/42V~ 401-500Hz 11h	24/42V= DC 10h
„Twist“ Connector IP67								
								
16	2	2622	2822-12	2822-4	2822-2	2822-3	2822-11	2822-10
16	3	2632	2832-12	2832-4	2832-2	2832-3	2832-11	2832-10
32	2	2722	2922-12	2922-4	2922-2	2922-3	2922-11	2922-10
32	3	2732	2932-12	2932-4	2932-2	2932-3	2932-11	2932-10
„Twist“ Flanged socket straight IP44 Flange 60x54 Fixing center 44x44								
								
16	2	362ft9	382-12ft9	382-4ft9	382-2ft9	382-3ft9	382-11ft9	382-10ft9
16	3	363ft9	383-12ft9	383-4ft9	383-2ft9	383-3ft9	383-11ft9	383-10ft9
32	2	372ft9	392-12ft9	392-4ft9	392-2ft9	392-3ft9	392-11ft9	392-10ft9
32	3	373ft9	393-12ft9	393-4ft9	393-2ft9	393-3ft9	393-11ft9	393-10ft9
„Twist“ Flanged socket straight IP67 Flange 60x54 Fixing center 44x44								
								
16	2	3622ft9	3822-12ft9	3822-4ft9	3822-2ft9	3822-3ft9	3822-11ft9	3822-10ft9
16	3	3632ft9	3832-12ft9	3832-4ft9	3832-2ft9	3832-3ft9	3832-11ft9	3832-10ft9
32	2	3722ft9	3922-12ft9	3922-4ft9	3922-2ft9	3922-3ft9	3922-11ft9	3922-10ft9
32	3	3732ft9	3932-12ft9	3932-4ft9	3932-2ft9	3932-3ft9	3932-11ft9	3932-10ft9



PC ELECTRIC Ges.m.b.H.

A-4973 St. Martin/Innkreis
Diesseits 145
AUSTRIA - EUROPE
Tel. +43 / 7751 / 61220
Fax +43 / 7751 / 6969
e-mail: office@pcelectric.at
www.pcelectric.at